



# SURGIKOR

## HEX PRODUCT CATALOG



MANUFACTURED AND SURFACE TREATED IN **GERMANY**

[WWW.SURGIKORIMPLANTS.COM](http://WWW.SURGIKORIMPLANTS.COM)

# INTRODUCTION TO SURGIKOR IMPLANTS

Surgikor delivers world class quality and clinical excellence in the field of implant dentistry. We have combined decades of clinical experience with the most current research to create a robust range of dental implants and oral rehabilitation solutions. Our focus is on prosthetically driven implantology to meet every need of the modern dentist.

Surgikor implants are fabricated in a modern state-of-the-art facility in Rostock, Germany. We employ medical **Grade 23 Titanium Alloy (Ti-6Al-4V)** for the dental implant bodies and prosthetic components. Grade 23 Titanium Alloy is one of the strongest titanium alloys available for medical devices. Grade 23 Titanium Alloy is also more chemically pure than Grade 5 Titanium utilized by other manufacturers.

**Osseointegration** of a dental implant into bone is dependent on numerous factors such as implant design, surgical protocol, and the bone volume, quality, and type. Of particular importance is the implant Macrotopography, Microtopography and Nanotopography.

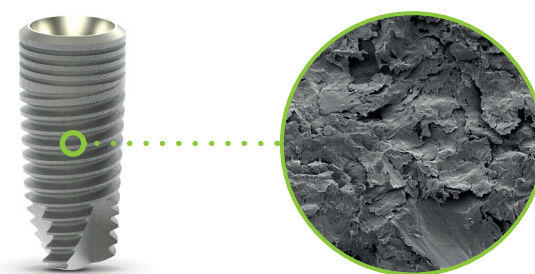
**Macrotopography** refers to the body and thread design of the dental implant. Surgikor implants employ specific body, thread, and platform designs

to meet every surgical and prosthetic application of modern implant dentistry. Please refer to the product description of each implant to review their specific characteristics.

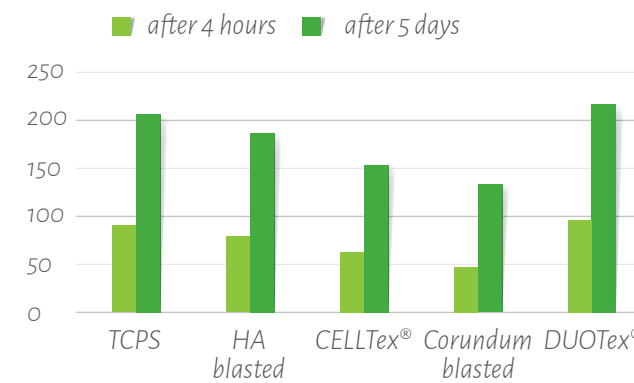
**Microtopography** refers to the surface roughness created by blasting the implant surface with hydroxyapatite(HA) particles. Our proprietary blasting process creates a surface with a average roughness of 1.1  $\mu\text{m}$  (1,100 nm)average. Implant surfaces roughened to this pore size range exhibit high resistance to compressive, tensile and shear forces.

**Nanotopography** refers to the surface roughness created by acid etching the implant surface. Our proprietary acid etching process creates pores in the 1-100 nm range. Creating pores in this size range achieves three goals:

1. Increasing the hydrophilicity



2. Facilitating cell adhesion

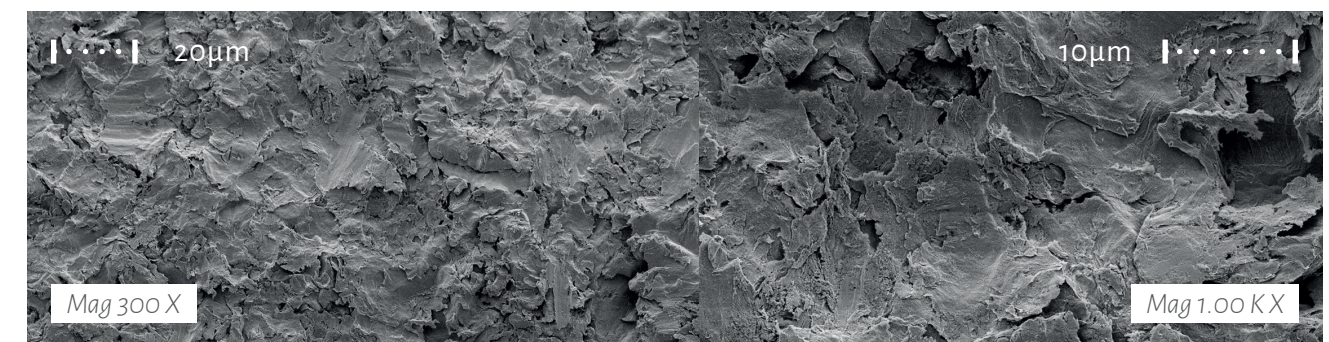


Cell quantity after 4 h and 5 d cultivation in vitro



Cell vitality (MTS conversion test)

3. Removing debris and contamination.



Our proprietary surface treatment not only rids the implant surface of all contaminants. It also creates an ideal micro and nano pore topography. Please refer to our surface treatment brochure for all of the details of our surface treatment process.

## Sterilization and Packaging

Once Surgikor implants receive the surface treatment, they are shipped to our facility near Stuttgart, Germany to be cleaned, disinfected, sterilized and packaged in a succession of clean rooms, to ensure all micro-biologic contamination is eliminated.

Sterilization is accomplished with the use of Gamma radiation, resulting in microorganisms inactivated by damage to their nucleic acids. The components are then assembled and hermetically sealed in blister packs, and placed into individual boxes.





# IMMEDIATE™ IMPLANTS

## Hex Connection

	Diameter	6.0 mm	8.0 mm	10 mm	11.5 mm	13.0 mm	16.0 mm
	3.75 mm 		PIRH3708	PIRH3710	PIRH3711	PIRH3713	PIRH3716
	4.2 mm 		PIRH4208	PIRH4210	PIRH4311	PIRH4313	PIRH4316
	4.5 mm 	PIRH4506	PIRH4508	PIRH4510	PIRH4511	PIRH4513	PIRH4516
	5.0 mm 	PIRH5006	PIRH5008	PIRH5010	PIRH5011	PIRH5013	PIRH5016
	6.0 mm 	PIRH6006	PIRH6008	PIRH6010	PIRH6011	PIRH6013	PIRH6016
	7.0 mm 	PIRH7006	PIRH7008	PIRH7010			

## Drilling





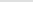
Drill Speed (rpm)		700-900	700-900	700-900	700-900	700-900	700-900	700-900	700-900	
Drill Diameter (mm)		1.4	2.0	2.5	3.0	3.5	4.0	4.5	5.0	5.5
REGULAR	3.5	•	○							
	3.75	•	•	●						
WIDE	4.2	•	•	•	●					
	4.5	•	•	•	●					
	5.0	•	•	•	•	●				
	6.0	•	•	•	•	•	•	●		
	7.0	•	•	•	•	•	•	•	•	●

# VERSATILE™ IMPLANTS

## Hex Connection

	Diameter	8.0 mm	10 mm	11.5 mm	13.0 mm	16.0 mm
	3.5 mm 	PVRH3508	PVRH3510	PVRH3511	PVRH3513	PVRH3516
	3.75 mm 	PVRH3708	PVRH3710	PVRH3711	PVRH3713	PVRH3716
	4.2 mm 	PVRH4208	PVRH4210	PVRH4211	PVRH4213	PVRH4216
	4.5 mm 	PVRH4508	PVRH4510	PVRH4511	PVRH4513	PVRH4516
	5.0 mm 	PVRH5008	PVRH5010	PVRH5011	PVRH5013	PVRH5016
	6.0 mm 	PVRH6008	PVRH6010	PVRH6011	PVRH6013	PVRH6016

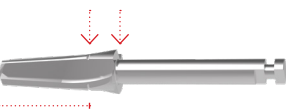
## Drilling

Drill Speed (rpm)		700-900	700-900	700-900	700-900	700-900	700-900	700-900	700-900
Drill Diameter (mm)		1.4	2.0	2.5	3.0	3.5	4.0	4.5	5.0
REGULAR	3.5	•	•						
	3.75	•	•						
WIDE	4.2	•	•	•					
	4.5	•	•	•	•				
	5.0	•	•	•	•	•			
	6.0	•	•	•	•	•	•	•	



Bone Type

\* Final Drill with Drill Level  
Type 3 and 4   Type 1 and 2



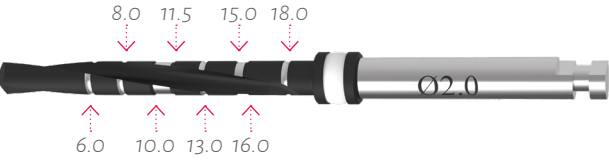
Counter-sink design

\* Counter-Sink  
Optional use for Type 1 and 2  
Must be used in Type 3 and 4



Drill Length

\* Straight Drills



Implant ø 3.5 mm



Implant ø 3.75 mm



Implant ø 4.2 mm



Implant ø 4.5 mm



Implant ø 5.0 mm



Implant ø 6.0 mm



Implant ø 7.0 mm

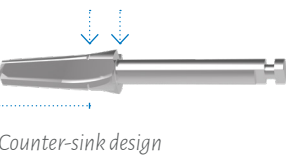






Bone Type

\* Final Drill with Drill Level  
Type 3 and 4   Type 1 and 2



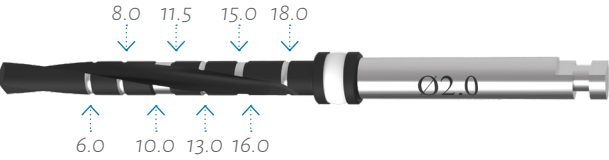
Counter-sink design

\* Counter-Sink  
Optional use for Type 1 and 2  
Must be used in Type 3 and 4



Drill Length

\* Straight Drills



Implant  $\varnothing$  3.5 mm



Implant  $\varnothing$  3.75 mm



Implant  $\varnothing$  4.2 mm



Implant  $\varnothing$  4.5 mm



Implant  $\varnothing$  5.0 mm



Implant  $\varnothing$  6.0 mm





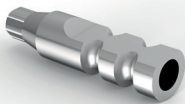
# HEALING ABUTMENTS, IMPRESSION TRANSFERS AND ANALOGS

## Titanium Healing Abutment



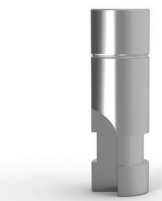
Emergence	Platform	2.0 mm	3.0 mm	4.0 mm	5.0 mm	6.0 mm	7.0 mm
Narrow (4mm)	Hex	HCN2RH	HCN3RH	HCN4RH	HCN5RH	HCN6RH	HCN7RH
Standard (5mm)	Hex	HCS2RH	HCS3RH	HCS4RH	HCS5RH	HCS6RH	HCS7RH
Wide (7mm)	Hex	HCW2RH	HCW3RH	HCW4RH	HCW5RH	HCW6RH	

## Impression Transfer



Emergence	Platform	Closed Tray	Open Tray	Simple
Narrow	Hex	ITCN9RH	ITON15RH	CLTN9RH
Standard	Hex	ITC9RH	ITO15RH	CLT9RH

## Implant Analog



Platform	AN
Hex	ANRH

# TITANIUM ABUTMENTS

## Straight Titanium Abutment (Non-Shouldered)



Emergence	Platform	5.0 mm	7.0 mm	9.0 mm	12.0 mm
Narrow	Hex	NSN5RH	NSN7RH	NSN9RH	-
Regular	Hex	NS5RH	NS7RH	NS9RH	NS12RH
Wide	Hex	-	-	NSW9RH	NSW12RH

## Angled Titanium Abutment (Non-Shouldered)



Platform	15 Degree			25 Degree		
	9.0 mm	11.0 mm	13.0 mm	9.0 mm	11.0 mm	13.0 mm
Hex	NS159RH	NS1511RH	NS1513RH	NS259RH	NS2511RH	NS2513RH

## Straight Titanium Anatomic Abutment



Platform	1.0 mm	2.0 mm	3.0 mm
Hex	S1RH	S2RH	S3RH

## Angled Titanium Anatomic Abutment



Platform	15 Degree			25 Degree		
	1.0 mm	2.0 mm	3.0 mm	1.0 mm	2.0 mm	3.0 mm
Hex	S151RH	S152RH	S153RH	S251RH	S252RH	S253RH



# CASTABLE ABUTMENTS

## Plastic Sleeve (Castable)



Platform	Indexed	Non -Indexed
	15mm	15mm
Hex	PS15RH	PS15OR

## Straight Anatomic Plastic Sleeve (Castable)



Platform	1.0 mm	2.0 mm	3.0 mm
Hex	PSS1RH	PSS2RH	PSS3RH

## Angled Anatomic Plastic Sleeve (Castable)



Platform	1.0 mm	15 Degree	3.0 mm
		2.0 mm	
Hex	PSS1RH	PSS2RH	PSS3RH

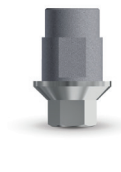
## Cast-To Abutment



Platform	Chrome Cobalt Non -Indexed	Chrome Cobalt Indexed
Hex	UCLACIRH	UCLACNIRH

# DIGITAL RESTORATIVE PRODUCTS

## CAD/CAM Abutment (TiBase)



Platform	Indexed	Non-Indexed
Hex	TBAHR-1	TBAHR-0

## Scan Abutment (Model)



Platform	Indexed
Hex	SAMHR-1

## Scan Abutment (Intra-Oral)



Platform	Indexed
Hex	SAIHR-1

# TEMPORARY ABUTMENTS

## Peek Straight Anatomic Abutment



Platform	1.0 mm	2.0 mm	3.0 mm
Hex	PKS1RH	PKS2RH	PKS3RH

## Peek Angled Anatomic Abutment



Platform	15 Degree			25 Degree		
	1.0 mm	2.0 mm	3.0 mm	1.0 mm	2.0 mm	3.0 mm
Hex	PKS151RH	PKS152RH	PKS153RH	PKS251RH	PKS252RH	PKS253RH



# MULTI-UNIT COMPONENTS

## Straight Multi-Unit Abutment



Platform	1.0 mm	2.0 mm	3.0 mm
Hex	MU00RH1	MU00RH2	MU00RH3

## Angled Multi-Unit Abutment



Platform	Angle	2.0 mm	3.0 mm	4.0 mm
Hex	18 Degrees	MU00RH1	MU00RH2	-
Hex	30 Degrees	-	MU30RH3	MU30RH4

## Multi-Unit Abutment Components



Plastic Sleeve	Titanium Sleeve	Healing Abutment	Analog	Closed Tray Transfer	Open Tray Transfer
PSADPXX	TSAD	MUHC001	ANMU-01	ICMU-CC	ICMU-01

# BALL ATTACHMENT COMPONENTS

## Ball Attachment Abutment\*



Platform	1.0 mm	2.0 mm	3.0 mm	4.0 mm	5.0 mm	6.0 mm
Hex	BATP1RH	BATP2RH	BATP3RH	BATP4RH	BATP5RH	BATP6RH

\* Includes metal cap, liners and protective disc

## Ball Attachment Components



Metal Cap	Liner Hard (Gray)	Liner Medium (White)	Liner Soft (Red)	Protective Disc
BATMC	BATSC1	BATSC2	BATSC3	BATPD

## Fixation Screws

Abutment Screw	Open Tray Transfer		Closed Tray Transfer	Multi-Unit Abutment
	Short	Long		
SCHr	SCHop	SCHRlo	SCHcl	SCHad



Multi-Unit Sleeve	Multi-Unit Open Tray Transfer	Multi-Unit Closed Tray Transfer
SCCNsh	SCMUop	SCMUcl





## **SURGIKOR**

Tel. 888-823-5553

Fax 310-558-8882

[info@surgikorimplants.com](mailto:info@surgikorimplants.com)

[www.surgikorimplants.com](http://www.surgikorimplants.com)

