



SURGIKOR

CONICAL PRODUCT CATALOG



MANUFACTURED AND SURFACE TREATED IN **GERMANY**

WWW.SURGIKORIMPLANTS.COM

INTRODUCTION TO SURGIKOR IMPLANTS

Surgikor delivers world class quality and clinical excellence in the field of implant dentistry. We have combined decades of clinical experience with the most current research to create a robust range of dental implants and oral rehabilitation solutions. Our focus is on prosthetically driven implantology to meet every need of the modern dentist.

Surgikor implants are fabricated in a modern state-of-the-art facility in Rostock, Germany. We employ medical **Grade 23 Titanium Alloy (Ti-6Al-4V)** for the dental implant bodies and prosthetic components. Grade 23 Titanium Alloy is one of the strongest titanium alloys available for medical devices. Grade 23 Titanium Alloy is also more chemically pure than Grade 5 Titanium utilized by other manufacturers.

Osseointegration of a dental implant into bone is dependent on numerous factors such as implant design, surgical protocol, and the bone volume, quality, and type. Of particular importance is the implant Macrotopography, Microtopography and Nanotopography.

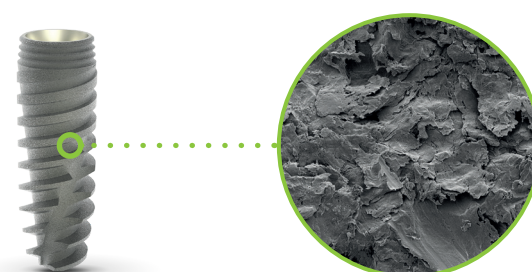
Macrotopography refers to the body and thread design of the dental implant. Surgikor implants employ specific body, thread, and platform designs

to meet every surgical and prosthetic application of modern implant dentistry. Please refer to the product description of each implant to review their specific characteristics.

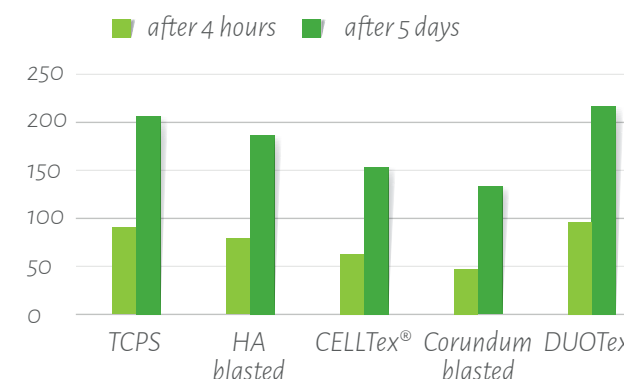
Microtopography refers to the surface roughness created by blasting the implant surface with hydroxyapatite(HA) particles. Our proprietary blasting process creates a surface with a average roughness of 1.1 μm (1,100 nm)average. Implant surfaces roughened to this pore size range exhibit high resistance to compressive, tensile and shear forces.

Nanotopography refers to the surface roughness created by acid etching the implant surface. Our proprietary acid etching process creates pores in the 1-100 nm range. Creating pores in this size range achieves three goals:

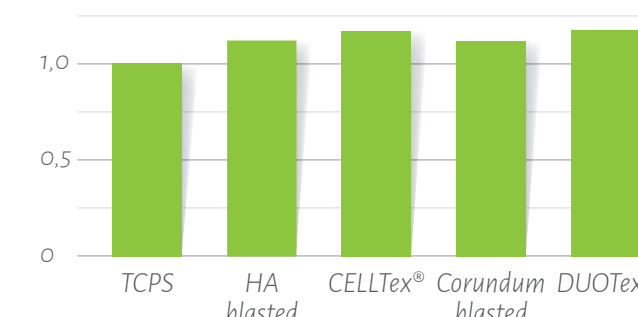
1. Increasing the hydrophilicity



2. Facilitating cell adhesion

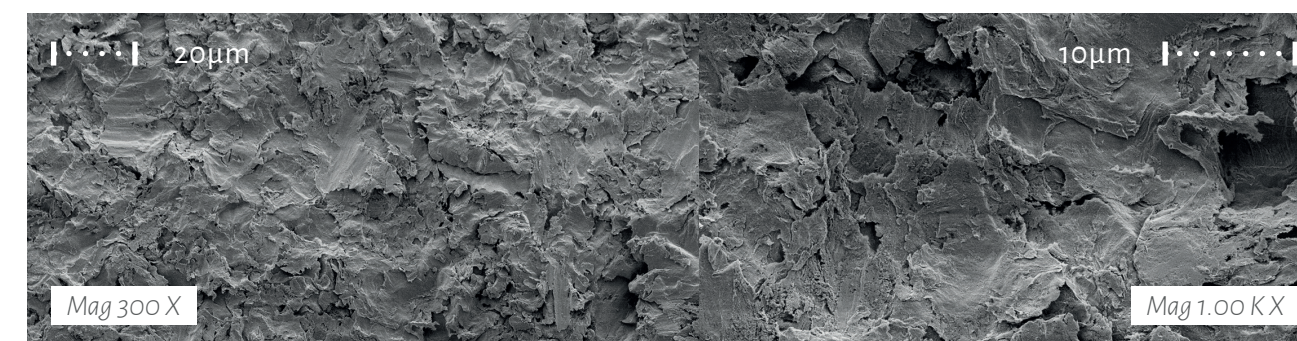


Cell quantity after 4 h and 5 d cultivation in vitro



Cell vitality (MTS conversion test)

3. Removing debris and contamination.



Our proprietary surface treatment not only rids the implant surface of all contaminants. It also creates an ideal micro and nano pore topography. Please refer to our surface treatment brochure for all of the details of our surface treatment process.

Sterilization and Packaging

Once Surgikor implants receive the surface treatment, they are shipped to our facility near Stuttgart, Germany to be cleaned, disinfected, sterilized and packaged in a succession of clean rooms, to ensure all micro-biologic contamination is eliminated.

Sterilization is accomplished with the use of Gamma radiation, resulting in microorganisms inactivated by damage to their nucleic acids. The components are then assembled and hermetically sealed in blister packs, and placed into individual boxes.



FIXATION™ IMPLANTS

Conical Connection



Diameter		8.5 mm	10 mm	11.5 mm	13 mm	15 mm
3.0 mm	●		PFNC3010	PFNC3011	PFNC3013	PFNC3015
3.5 mm	○	PFRC3508	PFRC3510	PFRC3511	PFRC3513	PFRC3515
4.3 mm	●	PFWC4308	PFWC4310	PFWC4311	PFWC4313	PFWC4315
5.0 mm	●	PFWC5008	PFWC5010	PFWC5011	PFWC5013	PFWC5015

Drilling

Drill Speed (rpm)		700-900	700-900	700-900	700-900	700-900
Drill Diameter (mm)		1.4	2.0	2.5	3.0	3.5
NARROW	3.0	●				
REGULAR	3.5	•	○			
WIDE	4.3	•	•	•	●	
	5.0	•	•	•	•	●

SOLUTION™ IMPLANTS

Conical Connection



Diameter		8.5 mm	10 mm	11.5 mm	13.0 mm
3.5 mm	●	PVRH3508	PVRH3510	PVRH3511	PVRH3513
4.0 mm	●	PVRH4208	PVRH4210	PVRH4211	PVRH4213
4.5 mm	●	PVRH4508	PVRH4510	PVRH4511	PVRH4513
5.0 mm	●	PVRH5008	PVRH5010	PVRH5011	PVRH5013
6.0 mm	●	PVRH6008	PVRH6010	PVRH6011	PVRH6013

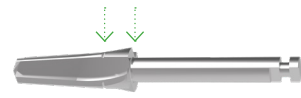
Drilling

Drill Speed (rpm)		700-900	700-900	700-900	700-900	700-900	700-900
Drill Diameter (mm)		1.4	2.0	2.5	3.0	3.5	4.0
NARROW	3.0	•	○				
	3.25	•	○				
REGULAR	3.5	•	•	●			
	4.0	•	•	•	●		
WIDE	4.5	•	•	•	•	●	
	5.0	•	•	•	•	•	●



Bone Type

* Final Drill with Drill Level
Type 3 and 4 Type 1 and 2



Counter-sink design

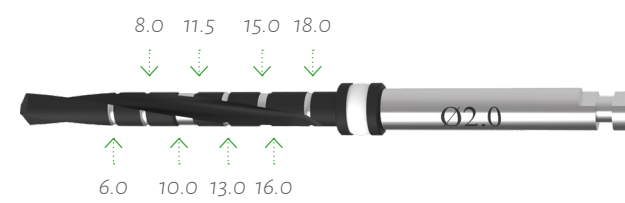
* Counter-Sink

Optional use for Type 1 and 2
Must be used in Type 3 and 4



Drill Length

* Straight Drills



Implant Ø 3.0 mm



1.5 mm

3.0 mm

3.0 mm

Lance Drill
(700-900 rpm)

Alignment
Pin

Final
Drill*
(50 rpm)

Implant
(50 rpm)

Implant Ø 3.5 mm



2.0 mm

1.5 mm

3.5 mm

3.5 mm

3.5 mm

Lance Drill
(700-900 rpm)

Straight Drill*
(50 rpm)

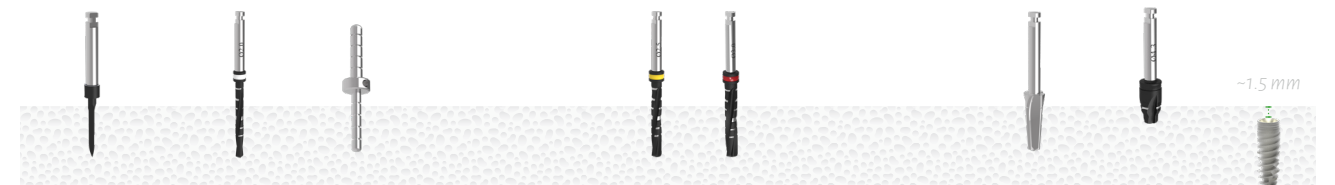
Alignment
Pin

Final
Drill*
(50 rpm)

Counter-Sink*
(50 rpm)

Implant
(50 rpm)

Implant Ø 4.3 mm



2.0 mm

1.5 mm

2.5 mm

3.0 mm

4.3 mm

4.3 mm

4.3 mm

Lance Drill
(700-900 rpm)

Straight Drill*
(50 rpm)

Alignment
Pin

Straight Drills*
(50 rpm)

Final
Drill*
(50 rpm)

Counter-Sink*
(50 rpm)

Implant
(50 rpm)

Implant Ø 5.0 mm



2.0 mm

1.5 mm

2.5 mm

3.0 mm

3.5 mm

5.0 mm

5.0 mm

5.0 mm

Lance Drill
(700-900 rpm)

Straight Drill*
(50 rpm)

Alignment
Pin

Straight Drills*
(50 rpm)

Final
Drill*
(50 rpm)

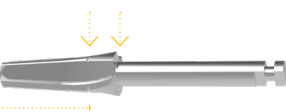
Counter-Sink*
(50 rpm)

Implant
(50 rpm)



Bone Type

* Final Drill with Drill Level
Type 3 and 4 Type 1 and 2



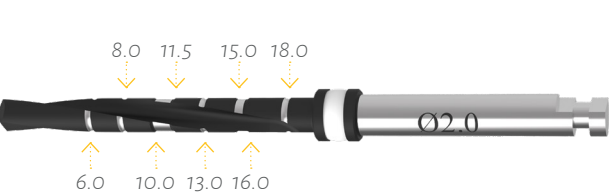
Counter-sink design

* Counter-Sink
Optional use for Type 1 and 2
Must be used in Type 3 and 4



Drill Length

* Straight Drills



Implant ø 3.0 mm



Implant ø 3.25 mm



Implant ø 3.5 mm



Implant ø 4.0 mm



Implant ø 4.5 mm



Implant ø 5.0 mm





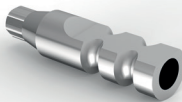
HEALING ABUTMENTS, IMPRESSION TRANSFERS AND ANALOGS

Titanium Healing Abutment



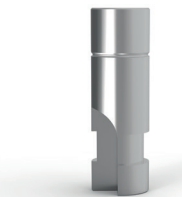
Emergence	Platform		2.0 mm	3.0 mm	4.0 mm	5.0 mm	6.0 mm	7.0 mm
Standard (4mm)	Narrow	●	HC2NC	HC3NC	HC4NC	HC5NC	HC6NC	HC7NC
Standard (5mm)	Regular	●	HC2RC	HC3RC	HC4RC	HC5RC	HC6RC	HC7RC
Standard (5mm)	Wide	●	HC2WC	HC3WC	HC4WC	HC5WC	HC6WC	HC7WC
Wide (7mm)	Wide	●	HCW2WC	HCW3WC	HCW4WC	HCW5WC	-	-

Impression Transfer



Emergence	Closed Tray	Open Tray	Simple
Narrow	ITC9NC	ITO15NC	CLT9NC
Standard	ITC9RC	ITO15RC	CLT9RC
Wide	ITC9WC	ITO15WC	CLT9WC

Implant Analog



Platform		AN
Narrow	●	ANNC
Narrow	●	ANRC
Narrow	●	ANWC

TITANIUM ABUTMENTS

Straight Titanium Abutment (Non-Shouldered)



Emergence	Platform		5.0 mm	7.0 mm	9.0 mm	12.0 mm
Regular	Narrow	●	NS5NC	NS7NC	NS9NC	NS12NC
Narrow	Regular	●	-	NSN7RC	NSN9RC	-
Regular	Regular	●	NS5RC	NS7RC	NS9RC	NS12RC
Wide	Regular	●	-	-	NSW9RC	NSW12RC
Narrow	Wide	●	NSN5WC	NSN7WC	NSN9WC	-
Regular	Wide	●	NS5WC	NS7WC	NS9WC	NS12WC
Wide	Wide	●	-	-	NSW9WC	NSW12WC

Angled Titanium Abutment (Non-Shouldered)



Emergence	Platform		15 Degree 9.0 mm	25 Degree 11.0 mm
Regular	Narrow	●	NS159RH	NS259RH
Regular	Regular	●	NS159RH	NS259RH
Regular	Wide	●	NS159RH	NS259RH

Straight Titanium Anatomic Abutment



Emergence	Platform		1.0 mm	2.0 mm	3.0 mm
Regular	Narrow	●	S1NC	S2NC	S3NC
Regular	Regular	●	S1RC	S2RC	S3RC
Regular	Wide	●	S1WC	S2WC	S3WC

Angled Titanium Anatomic Abutment



		15 Degree			25 Degree		
Platform		1.0 mm	2.0 mm	3.0 mm	1.0 mm	2.0 mm	3.0 mm
Narrow	●	S151NC	S152NC	S153NC	-	-	-
Regular	●	S151NC	S152NC	S153NC	S251RC	S252RC	S253RC
Wide	●	S151WC	S152WC	S153WC	S251WC	S252WC	S253WC



TEMPORARY ABUTMENTS

Peek Straight Anatomic Abutment


	Platform		1.0 mm	15 Degree 2.0 mm	3.0 mm
	Regular	●	PKS1RC	-	PKS3RC
	Wide	●	PKS1WC	-	PKS3WC

Peek Angled Anatomic Abutment

	Platform		1.0 mm	15 Degree 2.0 mm	3.0 mm
	Regular	●	PKS151RC	PKS152RC	PKS153RC
	Wide	●	PKS151WC	PKS152WC	PKS153WC

BALL ATTACHMENT COMPONENTS

Ball Attachment Abutment*

	Platform		1.0 mm	2.0 mm	3.0 mm	4.0 mm	5.0 mm	6.0 mm
	Regular	●	BATP1RC	BATP2RC	BATP3RC	BATP4RC	BATP5RC	BATP6RC
	Wide	●	BATP1WC	BATP2 WC	BATP3WC	BATP4WC	BATP5WC	BATP6 WC

* Includes metal cap, liners and protective disc

Ball Attachment Components


				
Metal Cap	Liner Hard (Gray)	Liner Medium (White)	Liner Soft (Red)	Protective Disc
BATMC	BATSC1	BATSC2	BATSC3	BATPD

MULTI-UNIT COMPONENTS

Straight Multi-Unit Abutment

	Platform		1.5 mm	2.5 mm	3.5 mm
	Regular	●	MU00RC1	MU00RC2	MU00RC3
	Wide	●	MU00WC1	MU00WC2	MU00WC3

Angled Multi-Unit Abutment

	Platform		Angle	2.5 mm	3.5 mm	4.5 mm
	Regular	●	17 Degrees	MU18RC2	MU18RC3	-
	Regular	●	30 Degrees	-	MU30RC3	MU30RC4
	Wide	●	17 Degrees	MU18WC2	MU18WC3	-
	Wide	●	30 Degrees	-	MU30WC3	MU30WC4

Multi-Unit Abutment Components

					
Plastic Sleeve	Titanium Sleeve	Healing Abutment	Analog	Closed Tray Transfer	Open Tray Transfer
PSADPXX	TSAD	MUHC001	ANMU-01	ICMU-CC	ICMU-01



CASTABLE ABUTMENTS

Plastic Sleeve (Castable)



Platform		Indexed 15mm	Non -Indexed 15mm
Regular	●	PS15RC	-
Wide	●	PS15WC	-

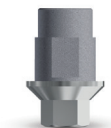
Cast-To Abutment



Platform		Chrome Cobalt Non -Indexed	Chrome Cobalt Indexed
Narrow	●	UCLACONC	UCLACINC
Regular	●	UCLACORC	UCLACIRC
Wide	●	UCLACOWC	UCLACIWC

DIGITAL RESTORATIVE PRODUCTS

CAD/CAM Abutment (TiBase)



Platform		Indexed	Non-Indexed
Regular	●	TBACR-1	TBACR-0
Wide	●	TBACW-1	TBACW-0

Scan Abutment (Model)



Platform		Indexed
Regular	●	SACRM-1
Wide	●	SACMW-1

Scan Abutment (Intra-Oral)






Platform		Indexed
Regular	●	SACRI-1
Wide	●	SACRI-1

FIXATION & MULTI-UNIT SCREWS

Fixation Screws

Platform	Abutment	Open Tray Transfer		Closed Tray Transfer	Multi-Unit Abutment
		Short	Long		
Narrow (M1.4)	● 				
Regular (M1.6)	● 				
Wide (M2.0)	● 				

Multi-Unit Screws

Multi-Unit Sleeve	Multi-Unit Open Tray Transfer	Multi-Unit Closed Tray Transfer
SCCNsh 	SCMUop 	SCMUcl 



SURGIKOR

Tel. 888-823-5553

Fax 310-558-8882

info@surgikorimplants.com

www.surgikorimplants.com

